

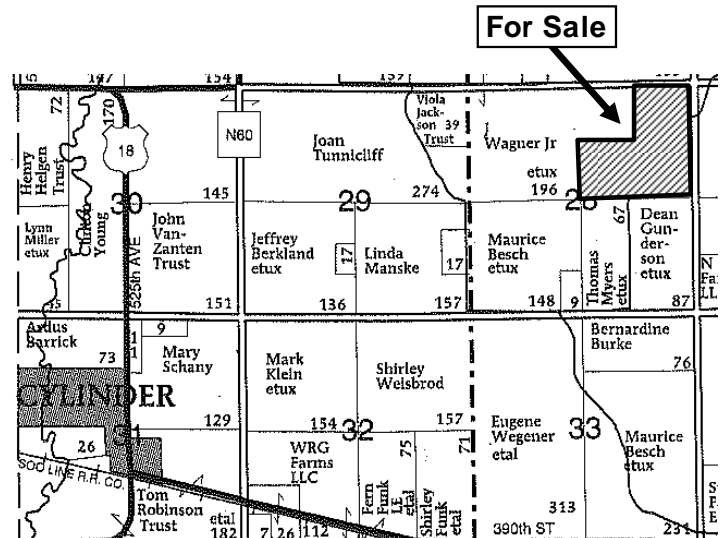
Public Land Auction

Fairfield Township – Palo Alto County
Thursday, September 25, 2008 – 10:00 a.m. at the farm
120 acres, more or less

Location – 3 miles northeast of Cylinder, IA

Legal Description – S½ NE¼ & the NE ¼ NE¼ of Section 28-96-31, Palo Alto Co., IA

Cropland Acres – 114.3 acres
Effective Crop Acres – 93.8 acres
Corn Base – 93.8 acres
DP Yield; CC Yield – 124 bu/ac; 124 bu/ac
Soybean Base – 0 acres
CRP – 8.0 ac. @ \$181.50/ac
12.5 ac. @ \$168.40/ac
Total 20.5 acres, both contracts expire 9/30/21
Real Estate Taxes – \$1,634/year
Lease – Terminated for '09
Cropland CSR* – 60.2*
Primary Soil – Linder, Webster, Talcot



*Digitally mapped with SST mapping software

This is a well-located farm only 7 miles from the POET Voyager ethanol plant in Emmetsburg.

Terms

- The buyer(s) will be expected to pay 10% cash down payment the day of the auction and the balance at closing when clear and merchantable title will be given.
- Closing is scheduled for November 4, 2008.
- Real estate taxes will be prorated to date of closing.
- Possession subject to farm lease effective until March 1, 2009 will be given at closing.
- Announcements the day of sale will supersede all other announcements.
- The seller will retain the right to refuse any or all bids.
- Stalcup Agricultural Service and its representatives are agents for the Sellers.

Veronica DePue Lufkin Farm, Owner

For more information contact Lyn Berkland or Nathan Deters at
Stalcup Ag Service 712-749-2752 or evenings at 712-299-1008 (Lyn)
Email: lberkland@stalcupag.com

Brian Drzycimski – Auctioneer/Broker Associate



910 Flindt Drive · P.O. Box 67
Storm Lake, IA 50588
(712) 749-2752 · Fax (712) 732-7371
www.stalcupag.com

Farm Management • Appraisals • Real Estate • Consultation

The information contained herein is believed to be correct, but no responsibility therefor is assumed by the owners or broker.