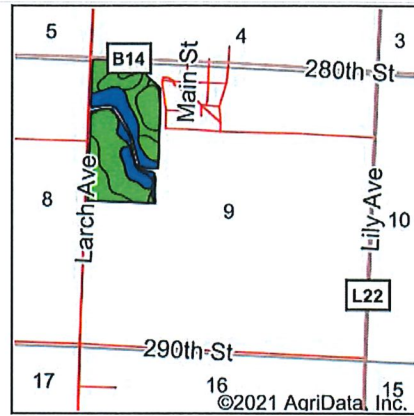
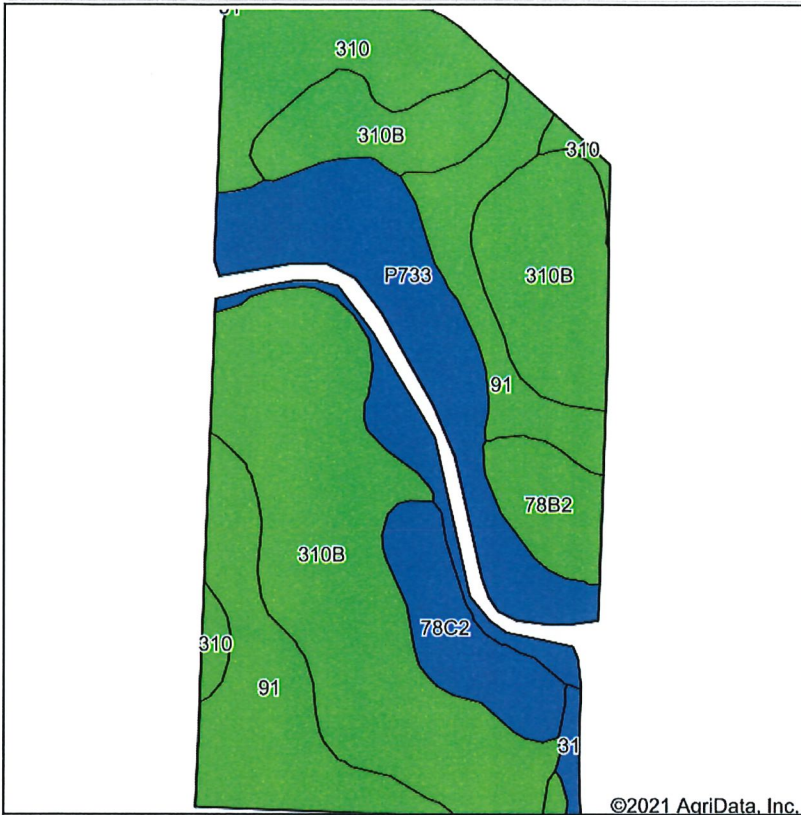


# Soils Map



State: **Iowa**  
 County: **Sioux**  
 Location: **9-97N-43W**  
 Township: **Grant**  
 Acres: **70.54**  
 Date: **11/2/2021**



Soils data provided by USDA and NRCS.

©2021 AgriData, Inc.

Area Symbol: IA167, Soil Area Version: 31

Code	Soil Description	Acres	Percent of field	CSR2 Legend	Non-Irr Class *c	CSR2**
310B	Galva silty clay loam, 2 to 5 percent slopes	29.68	42.1%		Ile	95
91	Primghar silty clay loam, 0 to 2 percent slopes	12.94	18.3%		Iw	100
P733	Calco silty clay loam, 0 to 2 percent slopes, occasionally flooded	12.78	18.1%		IIw	78
310	Galva silty clay loam, 0 to 2 percent slopes	7.32	10.4%		I	100
78C2	Sac silty clay loam, 5 to 9 percent slopes, eroded	4.30	6.1%		IIIe	82
78B2	Sac silty clay loam, 2 to 5 percent slopes, eroded	2.96	4.2%		Ile	86
31	Afton silty clay loam, 0 to 2 percent slopes, occasionally flooded	0.56	0.8%		IIw	80
<b>Weighted Average</b>					<b>1.77</b>	<b>92.1</b>

\*\*IA has updated the CSR values for each county to CSR2.

\*c: Using Capabilities Class Dominant Condition Aggregation Method

Soils data provided by USDA and NRCS.