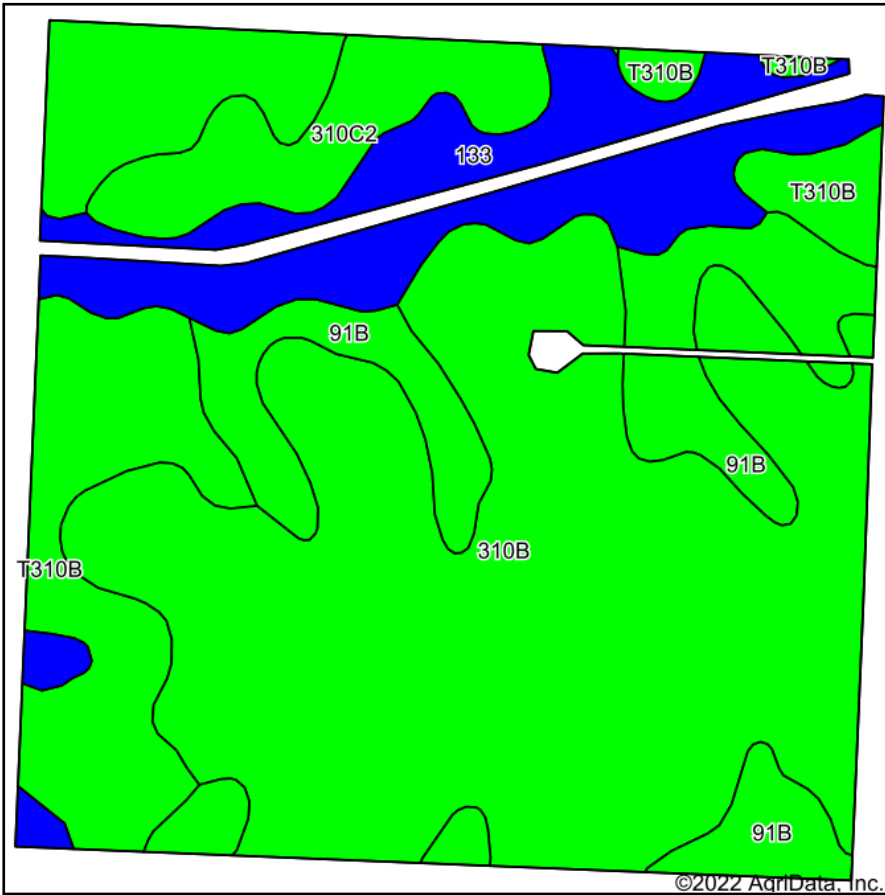
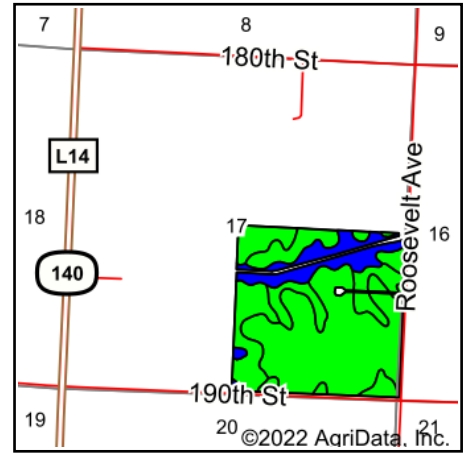


# Soils Map - Stoffel Farm



Soils data provided by USDA and NRCS.



State: **Iowa**  
 County: **Plymouth**  
 Location: **17-92N-43W**  
 Township: **Remsen**  
 Acres: **152.24**  
 Date: **4/20/2022**



Maps Provided By:



Area Symbol: IA149, Soil Area Version: 32

Code	Soil Description	Acres	Percent of field	CSR2 Legend	Non-Irr Class *c	CSR2**
310B	Galva silty clay loam, 2 to 5 percent slopes	83.77	55.0%		Ile	95
133	Colo silty clay loam, deep loess, 0 to 2 percent slopes, occasionally flooded	20.49	13.5%		IIw	78
91B	Primghar silty clay loam, 2 to 5 percent slopes	19.88	13.1%		Ile	95
T310B	Galva silty clay loam, terrace, 2 to 5 percent slopes	19.11	12.6%		Ile	95
310C2	Galva silty clay loam, 5 to 9 percent slopes, eroded	8.99	5.9%		IIIe	84
<b>Weighted Average</b>					<b>2.06</b>	<b>92.1</b>

\*\*IA has updated the CSR values for each county to CSR2.

\*c: Using Capabilities Class Dominant Condition Aggregation Method

Soils data provided by USDA and NRCS.