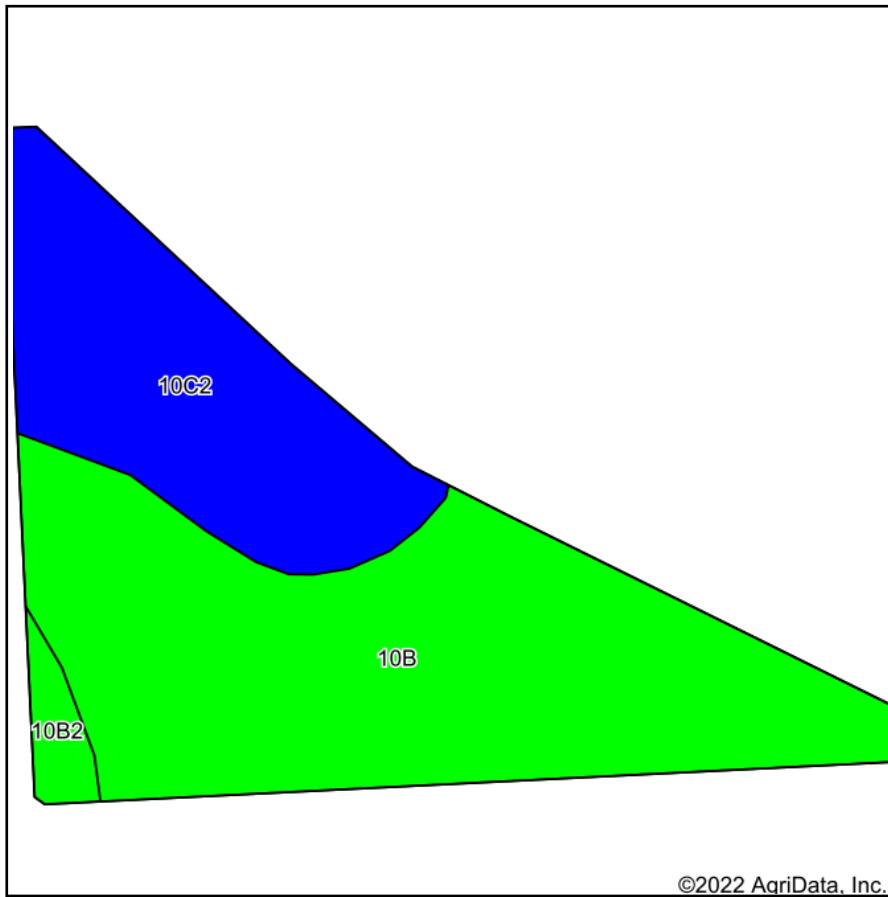
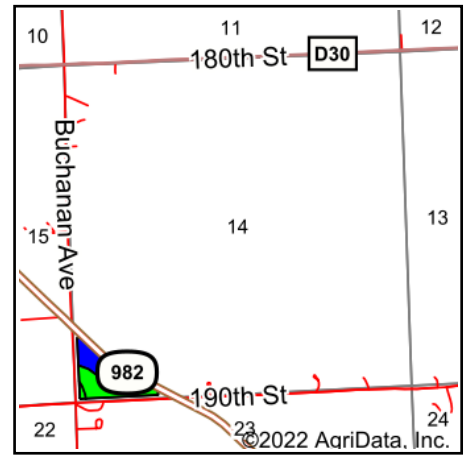


## Parcel 2 - Soil Map



Soils data provided by USDA and NRCS.



State: **Iowa**  
 County: **Woodbury**  
 Location: **14-88N-47W**  
 Township: **Woodbury**  
 Acres: **13.27**  
 Date: **2/10/2022**



Maps Provided By:



Area Symbol: IA193, Soil Area Version: 31

Code	Soil Description	Acres	Percent of field	CSR2 Legend	Non-Irr Class *c	*i Corn Bu	*i Soybeans Bu	CSR2**	CSR
10B	Monona silt loam, 2 to 5 percent slopes	8.60	64.8%		Ile	232	67.3	95	74
10C2	Monona silt loam, 5 to 9 percent slopes, eroded	4.29	32.3%		IIle	211.2	61.2	86	57
10B2	Monona silt loam, 2 to 5 percent slopes, eroded	0.38	2.9%		Ile	227.2	65.9	91	72
<b>Weighted Average</b>					<b>2.32</b>	<b>225.1</b>	<b>65.3</b>	<b>92</b>	<b>68.4</b>

\*\*IA has updated the CSR values for each county to CSR2.

\*i Yield data provided by the ISPAID Database version 8.1.1 developed by IA State University.

\*c: Using Capabilities Class Dominant Condition Aggregation Method

Soils data provided by USDA and NRCS.