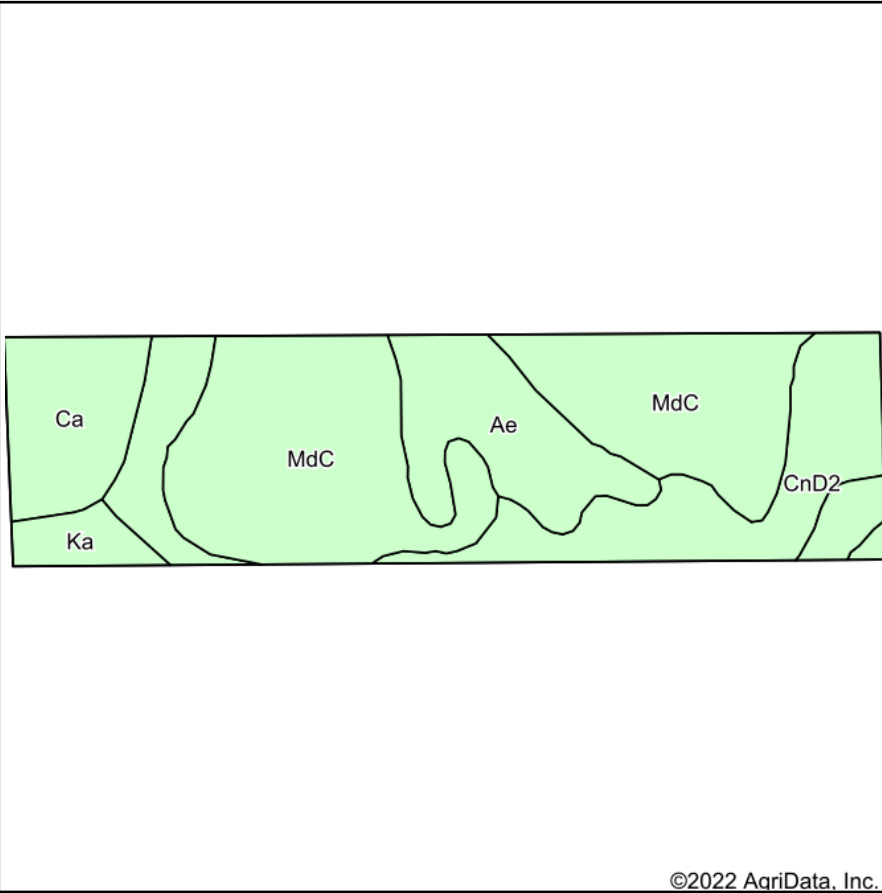
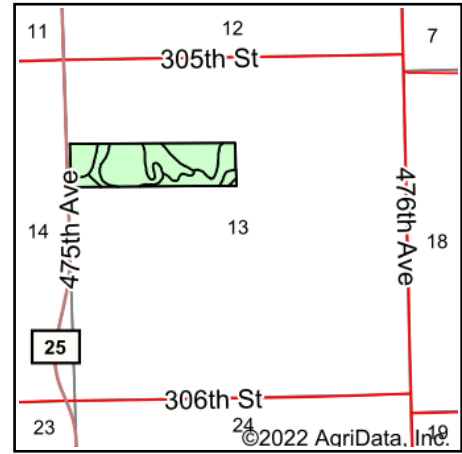


Soils Map



Soils data provided by USDA and NRCS.



State: **South Dakota**
 County: **Union**
 Location: **13-94N-50W**
 Township: **Emmet**
 Acres: **39.28**
 Date: **2/9/2022**



Maps Provided By:



© AgriData, Inc. 2021

www.AgriDataInc.com



Area Symbol: SD127, Soil Area Version: 25

Code	Soil Description	Acres	Percent of field	Non-Irr Class *c	Irr Class *c	Productivity Index	Corn Bu	Soybeans Bu	*n NCCPI Soybeans
MdC	Moody-Nora silty clay loams, 6 to 10 percent slopes	17.70	45.1%	IIIe	IVe	70	71	24	65
Ae	Alcester silty clay loam, 2 to 6 percent slopes	8.96	22.8%	IIe	IIIe	90			72
CnD2	Crofton-Nora complex, 6 to 11 percent slopes, eroded	6.97	17.7%	IVe	IVe	47			67
Ca	Calco silty clay loam, wet	4.30	10.9%	Vw		32			31
Ka	Kennebec silty clay loam	1.35	3.4%	Iw		94	162	54	72
Weighted Average						67.1	37.6	12.7	*n 63.5

*n: The aggregation method is "Weighted Average using all components"

*c: Using Capabilities Class Dominant Condition Aggregation Method

Soils data provided by USDA and NRCS.