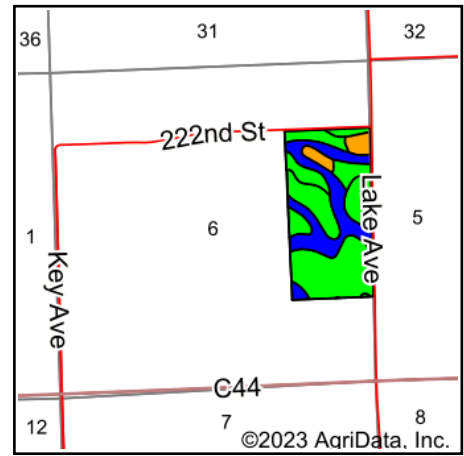


Soils Map



Soils data provided by USDA and NRCS.



State: **Iowa**
 County: **Plymouth**
 Location: **6-91N-45W**
 Township: **Stanton**
 Acres: **77.89**
 Date: **8/22/2023**



Maps Provided By:

 CUSTOMIZED ONLINE MAPPING
 © AgriData, Inc. 2023 www.AgriDataInc.com



Area Symbol: IA149, Soil Area Version: 33

| Code | Soil Description | Acres | Percent of field | CSR2 Legend | Non-Irr Class *c | *i Corn Bu | *i Soybeans Bu | CSR2** | CSR |
|------------------|---|-------|------------------|-------------|---------------------|------------|----------------|--------|-----|
| 310C2 | Galva silty clay loam, 5 to 9 percent slopes, eroded | 28.72 | 36.9% | | Ille | 211.2 | 61.2 | 84 | 51 |
| 467B | Radford silty clay loam, 2 to 5 percent slopes | 21.27 | 27.3% | | Ilw | 198.4 | 57.5 | 75 | 72 |
| T310B | Galva silty clay loam, terrace, 2 to 5 percent slopes | 17.49 | 22.5% | | Ile | 232.0 | 67.3 | 95 | 69 |
| 467 | Radford silty clay loam, 0 to 2 percent slopes | 3.91 | 5.0% | | Ilw | 206.4 | 59.9 | 79 | 74 |
| 116B | Graceville silt loam, 2 to 5 percent slopes | 2.66 | 3.4% | | Ile | 80.0 | 23.2 | 61 | 66 |
| 1C3 | Ida silt loam, 5 to 9 percent slopes, severely eroded | 2.14 | 2.7% | | Ille | 155.2 | 45.0 | 58 | 44 |
| 212 | Kennebec silt loam, 0 to 2 percent slopes, occasionally flooded | 1.57 | 2.0% | | Iw | 228.8 | 66.4 | 91 | |
| 310B | Galva silty clay loam, 2 to 5 percent slopes | 0.13 | 0.2% | | Ile | 232.0 | 67.3 | 95 | 68 |
| Weighted Average | | | | | 2.38 | 206.5 | 59.9 | 82.4 | *- |

**IA has updated the CSR values for each county to CSR2.

*- CSR weighted average cannot be calculated on the current soils data, use prior data version for csr values.

*i Yield data provided by the ISPAID Database version 8.1.1 developed by IA State University.

*c: Using Capabilities Class Dominant Condition Aggregation Method

Soils data provided by USDA and NRCS.