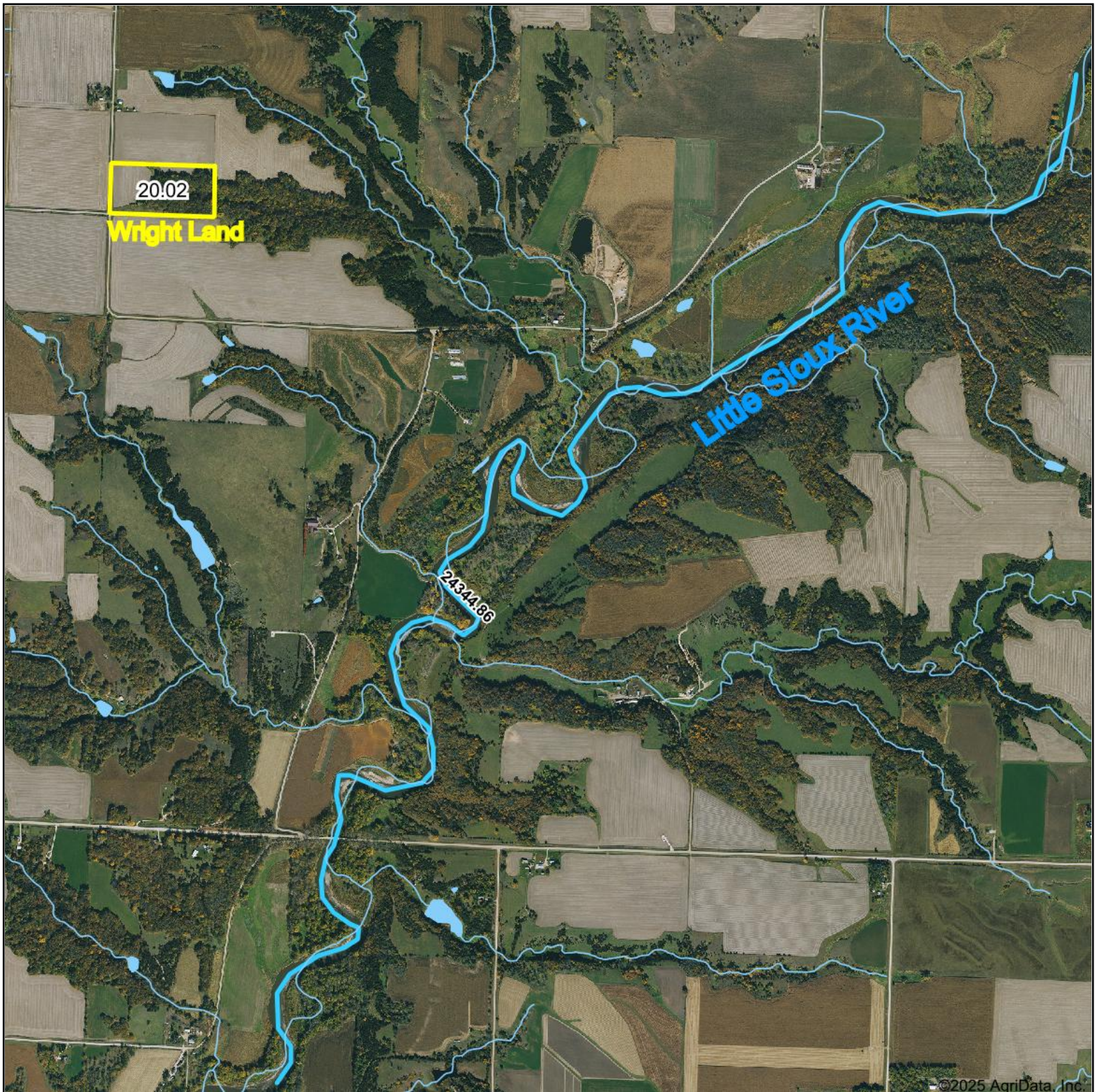


Wright Land is in watershed <1mi. to the Little Sioux River



Boundary Center: 42.831239, -95.501516

0ft 2003ft 4007ft

31-93N-39W
Cherokee County
Iowa



Maps Provided By:
 **surety**[®]
CUSTOMIZED ONLINE MAPPING
© AgriData, Inc. 2023 www.AgriDataInc.com

5/22/2025