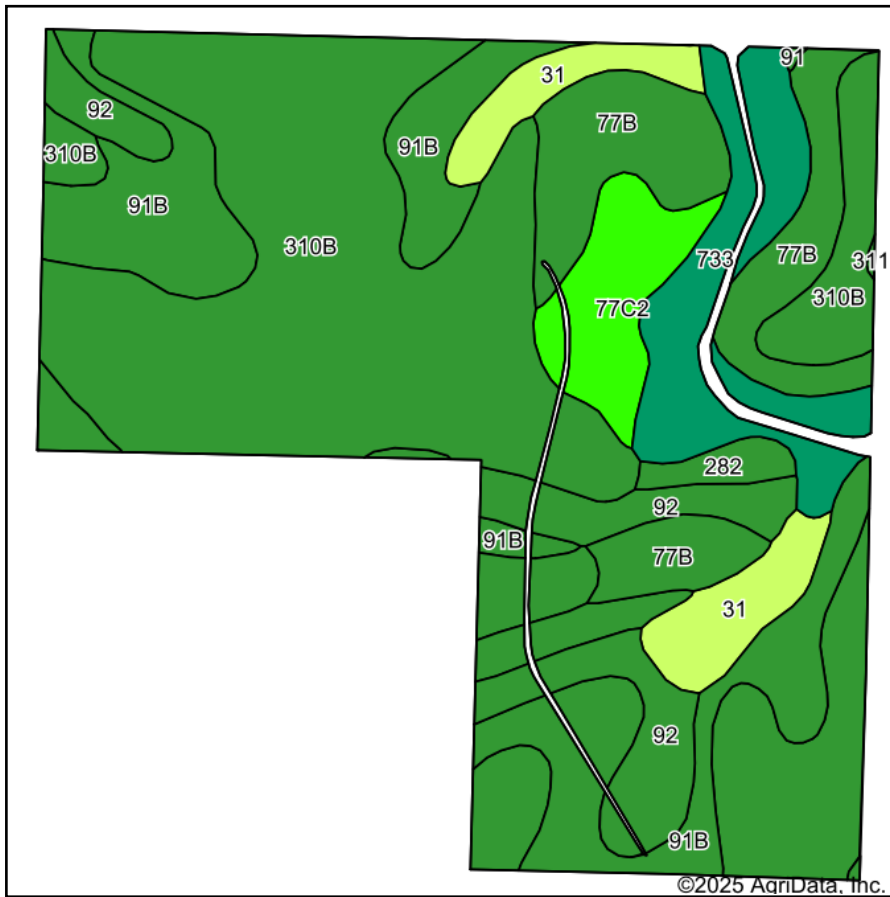
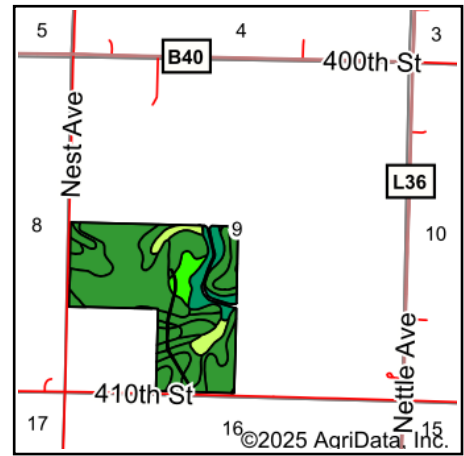


Cooper / Gootjes Soils Map



Soils data provided by USDA and NRCS.



State: **Iowa**
 County: **O'Brien**
 Location: **9-95N-42W**
 Township: **Baker**
 Acres: **113.73**
 Date: **6/19/2025**



Area Symbol: IA141, Soil Area Version: 29

Code	Soil Description	Acres	Percent of field	CSR2 Legend	CSR2**
310B	Galva silty clay loam, 2 to 5 percent slopes	50.32	44.1%		95
91B	Primghar silty clay loam, 2 to 5 percent slopes	20.90	18.4%		95
77B	Sac silty clay loam, loam substratum, 2 to 5 percent slopes	12.64	11.1%		95
733	Calco silty clay loam, 0 to 2 percent slopes, occasionally flooded	8.95	7.9%		78
92	Marcus silty clay loam, 0 to 2 percent slopes	8.59	7.6%		94
31	Afton silty clay loam, 0 to 2 percent slopes, occasionally flooded	5.89	5.2%		80
77C2	Sac silty clay loam, loam substratum, 5 to 9 percent slopes, eroded	5.20	4.6%		88
282	Ransom silty clay loam, 1 to 3 percent slopes	1.18	1.0%		100
91	Primghar silty clay loam, 0 to 2 percent slopes	0.06	0.1%		100
Weighted Average					92.5

**IA has updated the CSR values for each county to CSR2.

Soils data provided by USDA and NRCS.